

Lord Jegannath

College of Engineering and Technology

PSN Nagar, Ramanathichanputhur, Kumarapuramthoppur P.O,
Kanyakumari District - 629 402, Tamil Nadu, India

Accredited with 'A' grade by NAAC,

Approved by AICTE, Affiliated to Anna University - chennai



MANDATORY DISCLOSURE
2024-2025

1. Institution details

Description	Details provided by the Institution
Name of the Institution	Lord Jegannath College of Engineering and Technology
Address	PSN Nagar, Ramanathichanputhur Marungoor, Kanyakumari District, Tamil Nadu, 629402
Town/Village	Marungoor
State/UT	Tamilnadu
Pin	629402
Land Phone Number	04652-254919
Cell Number	9442367452
FAX Number	04652-254884
E-mail	principalljcet@yahoo.com
Alternate E-mail	principalljcet@gmail.com
Website Address	www.ljcet.org
Institution Type	Private
AFFILIATING UNIVERSITY	ANNA UNIVERSITY, CHENNAI

2. Details about Parent Organization

Name of the Parent Organization	PSN EDUCATIONAL & CHARITABLE TRUST
Address	12.P.S Nadar Building, Court Road
Town/Village	Nagercoil
State/UT	Tamilnadu
District	Kanyakumari
Pin	629001

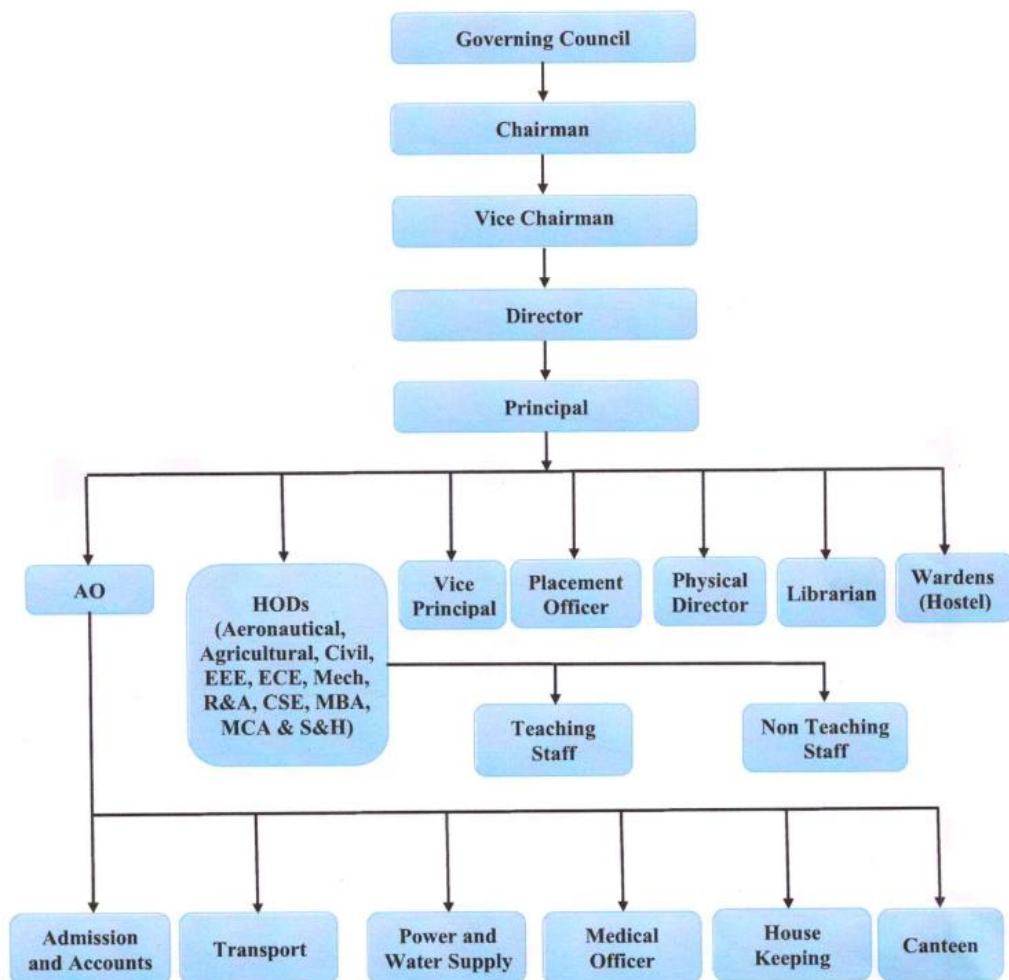
3. Head of Institution

Name	Dr. G. JIJI
Designation	Principal
Date of Joining	24-09-2018
Address	PSN Nagar, Ramanathichanputhur Marungoor, Kanyakumari District, Tamil Nadu, 629402
Mobile No	9442367452
Email	principalljcet@gmail.com
Profile	https://vidwan.inflibnet.ac.in/profile/410215


4. Governance

Sl. No	Type of Governance	Web Link
1.	Grievance Redressal mechanism for Faculty, staff and students	https://ljcet.org/grievanceredressal.php
2.	Establishment of Anti Ragging Committee	https://ljcet.org/anti-ragging.php
3.	Establishment of Online Grievance Redressal Mechanism	https://ljcet.org/grievanceredressal.php
4.	Details of Grievance Redressal Committee in the Institution and OMBUDSMAN by the University	https://ljcet.org/grievanceredressal.php
5.	Establishment of Internal Committee (IC)	https://ljcet.org/internal-committee.php
6.	Establishment of Committee for SC/ST	https://ljcet.org/sc-st-committee.php
7.	Internal Quality Assurance Cell	https://ljcet.org/about-iqac.php
8.	Equal Opportunity facilities Cell	https://ljcet.org/innovation-incubation.php

ORGANIZATION CHART



5. Land Location Details

Location	Rural
Title Deeds	1
Latitude	77.52447
Longitude	8.17141
Location map of the Institution	

6. Building Details

No of Buildings	8
Total Built-Up Area (Sq.mts)	27725
Total Carpet Area (Sq.mts)	19725
Total Circulation Area	700

7. Approved course Details

Sl. No	Program	Level of Course	Degree	Course	Course Duration (Years)	Year Started as per AICTE
1.	Engineering and Technology	Under Graduate	B.E	Aeronautical Engineering	4	2006
2.	Engineering and Technology	Under Graduate	B.E	Civil Engineering	4	2011
3.	Engineering and Technology	Under Graduate	B.E	Computer Science and Engineering	4	2006
4.	Engineering and Technology	Under Graduate	B.E	Electrical and Electronics Engineering	4	2014
5.	Engineering and Technology	Under Graduate	B.E	Electronics and Communication Engineering	4	2006
6.	Engineering and Technology	Under Graduate	B.E	Mechanical Engineering	4	2006
7.	Engineering and Technology	Under Graduate	B.E	Robotics and Automation	4	2012
8.	Engineering and Technology	Under Graduate	B.Tech	Agricultural Engineering	4	2022
9.	Engineering and Technology	Post Graduate	M.E	Applied Electronics	2	2011
10.	Engineering and Technology	Post Graduate	M.E	Communication Systems	2	2013
11.	Engineering and Technology	Post Graduate	M.E	Computer Science and Engineering	2	2012

12.	Engineering and Technology	Post Graduate	M.E	CAD/CAM	2	2014
13.	Engineering and Technology	Post Graduate	M.E	Manufacturing Engineering	2	2010
14.	Computer Applications	Post Graduate	MCA	Master of Computer Applications	2	2007
15.	Management Studies	Post Graduate	MBA	Masters in Business Administration	2	2008

8. Faculty

<https://ljcet.org/teachingstaff.php>

9. Admission

a. Under Graduate

Sl. No	Degree	Course	Course Duration (Years)	Year Started as per AICTE	Sanctioned Intake
1.	B.E	Aeronautical Engineering	4	2006	30
2.	B.E	Civil Engineering	4	2011	60
3.	B.E	Computer Science and Engineering	4	2006	60
4.	B.E	Electrical and Electronics Engineering	4	2014	30
5.	B.E	Electronics and Communication Engineering	4	2006	30
6.	B.E	Mechanical Engineering	4	2006	60
7.	B.E	Robotics and Automation	4	2012	30
8.	B.Tech	Agricultural Engineering	4	2022	60

b. Post Graduate

Sl. No	Degree	Course	Course Duration (Years)	Year Started as per AICTE	Sanctioned Intake
1.	M.E	Applied Electronics	2	2011	18
2.	M.E	Communication Systems	2	2013	18
3.	M.E	Computer Science and Engineering	2	2012	18
4.	M.E	CAD/CAM	2	2014	18
5.	M.E	Manufacturing Engineering	2	2010	18
6.	MCA	Master of Computer Applications	2	2007	30
7.	MBA	Master's in Business Administration	2	2008	60

10. Admission Procedure

Sl. No	Degree	Course	Mention the admission test	
			Counselling	Management
1.	Engineering and Technology	Under Graduate	TNEA	ENTRANCE
2.	Engineering and Technology	Post Graduate	TANCET	ENTRANCE
3.	MBA	MBA	TANCET	ENTRANCE
4.	MCA	MCA	TANCET	ENTRANCE

11. Information of Infrastructure and Other Resources Available

Sl. No	Level	Room Type	Room Id/Name	Building Name	Area of Room in sqm
1.	UG	Classroom	AE II	BLOCK 2	69
2.	UG	Classroom	AE III	BLOCK 2	69
3.	UG	Classroom	AE IV	BLOCK 2	69
4.	UG	Classroom	AGE I	BLOCK 1	69
5.	UG	Classroom	AGE II	BLOCK 1	69
6.	UG	Classroom	AGE III	BLOCK 6	69
7.	UG	Classroom	AGE IV	BLOCK 3	69
8.	UG	Classroom	BME I	BLOCK 1	69
9.	UG	Classroom	BME II	BLOCK 1	69
10.	UG	Classroom	CEI	BLOCK 3	69
11.	UG	Classroom	CEII	BLOCK 3	69
12.	UG	Classroom	CEIII	BLOCK 3	69
13.	UG	Classroom	CEIV	BLOCK 3	69
14.	UG	Classroom	CSE I	BLOCK 2	69
15.	UG	Classroom	CSE II	BLOCK 2	69
16.	UG	Classroom	CSE IV	BLOCK 2	69
17.	UG	Classroom	CSEIII	BLOCK 2	69
18.	UG	Classroom	EC I	BLOCK 2	69
19.	UG	Classroom	EC II	BLOCK 2	69
20.	UG	Classroom	EC III	BLOCK 2	69
21.	UG	Classroom	EC IV	BLOCK 2	69
22.	UG	Classroom	EE I	BLOCK 5	69
23.	UG	Classroom	EE II	BLOCK 5	69
24.	UG	Classroom	EE III	BLOCK 5	69
25.	UG	Classroom	EE IV	BLOCK 5	69
26.	UG	Classroom	ME I	BLOCK 3	69
27.	UG	Classroom	ME II	BLOCK 3	69

28.	UG	Classroom	ME III	BLOCK 3	69
29.	UG	Classroom	ME IV	BLOCK 3	69
30.	UG	Classroom	RA I	BLOCK 3	69
31.	UG	Classroom	RA II	BLOCK 3	69
32.	UG	Classroom	RA III	BLOCK 3	69
33.	UG	Classroom	RA IV	BLOCK 3	69
34.	PG	Classroom	CC I	BLOCK 3	69
35.	PG	Classroom	CC II	BLOCK 3	69
36.	PG	Classroom	MBA C1	BLOCK 6	69
37.	PG	Classroom	MBA C2	BLOCK 6	69
38.	PG	Classroom	MCA I	BLOCK 6	69
39.	PG	Classroom	MCA II	BLOCK 6	69
40.	PG	Classroom	PG CS1	MECHNAICAL BLOCK	69
41.	PG	Classroom	PG CS2	MECHNAICAL BLOCK	69
42.	PG	Classroom	PGCS 1	BLOCK 2	69
43.	PG	Classroom	PGCS 2	BLOCK 2	69
44.	PG	Classroom	PGME I	BLOCK 3	69
45.	PG	Classroom	PGMEI	BLOCK 3	69
46.	PG	Classroom	PGMEII	BLOCK 3	69
47.	PG	Classroom	PGMII	BLOCK 3	69
48.	UG	BLOCK 4	CR WO	BLOCK 4	200
49.	UG	Additional BLOCK 4	WS A1	BLOCK 4	800

Sl. No	Level	Room Type	Room Id/Name	Building Name	Area of Room in sqm
1.	UG	Laboratory	Aero Lab 1	BLOCK 2	69
2.	UG	Laboratory	Aero Lab 2	BLOCK 3	69
3.	UG	Laboratory	Aero Lab 3	BLOCK 2	69
4.	UG	Laboratory	Aero Lab 4	BLOCK 2	69
5.	UG	Laboratory	Aero Lab 5	BLOCK 2	69

6.	UG	Laboratory	Aero Lab 6	BLOCK 2	69
7.	UG	Laboratory	CAD / CAM Lab	BLOCK 3	69
8.	UG	Laboratory	Chemistry	BLOCK 2	120
9.	UG	Laboratory	Mech Lab 1	BLOCK 3	69
10.	UG	Laboratory	CSLAB1	BLOCK 2	69
11.	UG	Laboratory	CSLAB2	BLOCK 2	69
12.	UG	Laboratory	CSLAB3	BLOCK 2	69
13.	UG	Laboratory	CSLAB4	BLOCK 2	69
14.	UG	Laboratory	CSLAB5	BLOCK 2	69
15.	UG	Laboratory	CSLAB6	BLOCK 2	69
16.	UG	Laboratory	DE LAB	BLOCK 2	69
17.	UG	Laboratory	DOM L	BLOCK 4	69
18.	UG	Laboratory	DS LAB	BLOCK 2	69
19.	UG	Laboratory	DSP L	BLOCK 2	69
20.	UG	Laboratory	ECI L	BLOCK 2	69
21.	UG	Laboratory	ECII L	BLOCK 2	69
22.	UG	Laboratory	EE Lab 1	BLOCK 5	69
23.	UG	Laboratory	EE Lab 2	BLOCK 5	69
24.	UG	Laboratory	EE Lab 3	BLOCK 5	69
25.	UG	Laboratory	EE Lab 4	BLOCK 5	69
26.	UG	Laboratory	EE Lab 5	BLOCK 5	69
27.	UG	Laboratory	EE Lab 6	BLOCK 5	69
28.	UG	Laboratory	EPL L	BLOCK 4	69
29.	UG	Laboratory	FM LAB	BLOCK 2	74
30.	UG	Laboratory	HDW L	BLOCK 3	69
31.	UG	Laboratory	HMT L	BLOCK 3	69
32.	UG	Laboratory	HY LAB	BLOCK 4	69
33.	UG	Laboratory	JP LAB	BLOCK 1	69
34.	UG	Laboratory	MEPL L	BLOCK 3	74
35.	UG	Laboratory	MFT L	BLOCK 3	69
36.	UG	Laboratory	MHT L	BLOCK 3	74

37.	UG	Laboratory	MPMCL	BLOCK 3	69
38.	UG	Laboratory	NW LAB	BLOCK 2	69
39.	UG	Laboratory	PHYS	BLOCK 2	120
40.	UG	Laboratory	PL LAB	BLOCK 3	69
41.	UG	Laboratory	RA L5	BLOCK 3	69
42.	UG	Laboratory	RA L6	BLOCK 3	69
43.	UG	Laboratory	RALAB1	BLOCK 3	69
44.	UG	Laboratory	RALAB2	BLOCK 3	69
45.	UG	Laboratory	RALAB3	BLOCK 3	69
46.	UG	Laboratory	RALAB4	BLOCK 3	69
47.	UG	Laboratory	S M L	BLOCK 3	69
48.	UG	Laboratory	SM L 1	BLOCK 3	69
49.	UG	Laboratory	SM LAB	BLOCK 3	74
50.	UG	Laboratory	SPI&II	BLOCK 3	69
51.	UG	Laboratory	SS LAB	BLOCK 3	69
52.	UG	Laboratory	TER L	BLOCK 3	85
53.	UG	Laboratory	VB LAB	BLOCK 2	69
54.	UG	Laboratory	VLSIL	BLOCK 2	69
55.	UG	Laboratory	WT LAB	BLOCK 2	69
56.	PG	Laboratory	AP L	BLOCK 2	69
57.	PG	Laboratory	AUTOL	BLOCK 3	69
58.	PG	Laboratory	CAD L	BLOCK 6	69
59.	PG	Laboratory	CC L1	BLOCK 3	69
60.	PG	Laboratory	CC L2	BLOCK 3	69
61.	PG	Laboratory	CIML	BLOCK 3	69
62.	PG	Laboratory	CYS L	BLOCK 2	69
63.	PG	Laboratory	EAEL1	BLOCK 2	69
64.	PG	Laboratory	EAEL2	BLOCK 2	69
65.	PG	Laboratory	EAEL3	BLOCK 2	69
66.	PG	Laboratory	MBA L2	BLOCK 6	69
67.	PG	Laboratory	MBA L3	BLOCK 6	69

68.	PG	Laboratory	MBA L4	BLOCK 6	69
69.	PG	Laboratory	MBA L5	BLOCK 3	69
70.	PG	Laboratory	NET L	BLOCK 6	69
71.	PG	Laboratory	OM LAB	BLOCK 6	69
72.	PG	Laboratory	OOADL	BLOCK 6	69
73.	PG	Laboratory	P L L	BLOCK 6	69
74.	PG	Laboratory	PGCSL1	BLOCK 2	69
75.	PG	Laboratory	PGCSL3	BLOCK 2	69
76.	PG	Computer Laboratory	MBA II	BLOCK 6	69
77.	PG	Computer Laboratory	MBA L1	BLOCK 6	69
78.	PG	Computer Laboratory	MCA III	BLOCK 6	69
79.	PG	Computer Laboratory	MCA IV	BLOCK 6	69
80.	PG	Computer Laboratory	OOPSL	BLOCK 6	69
81.	PG	Research Laboratory	AP RL	BLOCK 2	69
82.	PG	Research Laboratory	CSERL3	BLOCK 2	69
83.	PG	Research Laboratory	PG RL1	BLOCK 6	69
84.	PG	Research Laboratory	PGCSL2	BLOCK 2	69
85.	PG	Research Laboratory	PGCSRL	BLOCK 3	67
86.	UG	Seminar Hall	S H 1	BLOCK 2	135
87.	UG	Seminar Hall	S H 2	BLOCK 1	135
88.	UG	Seminar Hall	S H 3	BLOCK 3	135
89.	UG	Seminar Hall	S H 4	BLOCK 2	135
90.	UG	Seminar Hall	S H 5	BLOCK 2	135
91.	UG	Seminar Hall	S H 6	BLOCK 5	135
92.	UG	Seminar Hall	S H 7	BLOCK 3	135
93.	UG	Seminar Hall	S H 8	BLOCK 3	135
94.	PG	Seminar Hall	CC SH	BLOCK 3	135
95.	PG	Seminar Hall	CSESH	BLOCK 2	135
96.	PG	Seminar Hall	EAESH	BLOCK 2	135
97.	PG	Seminar Hall	MBA SH	BLOCK 6	135
98.	PG	Seminar Hall	MCASH	BLOCK 6	135

99.	PG	Seminar Hall	PGMESH	BLOCK 3	135
100.	UG	Drawing Hall	DH I	BLOCK 2	184
101.	PG	Guest Room	GR 1	BLOCK 1	69
102.	PG	Guest Room	GR 2	BLOCK 1	69
103.	PG	Guest Room	GR 3	BLOCK 1	69
104.	PG	Guest Room	GR 4	BLOCK 1	69
105.	PG	Kitchen	KITCHE	BLOCK 1	67

12.Placement Details:

<https://ljcet.org/placement.php>

13.Other Facilities

Facilities	Availability
Potable Water Supply	Yes
Electric Supply	Yes
Institution Web Site with Mandatory Disclosure	Yes
Notice Boards	Yes
Backup Electric Supply	Yes
General Insurance	Yes
Insurance for Students	Yes
Public Announcement System	Yes
LCD (or similar) projectors in class rooms	Yes
Telephone & FAX	Yes
Barrier free Environment	Yes
All Weather Approach (Road Motorised)	Yes
Group Insurance	Yes
Establishment of Grievance Redressal	Yes
Committee	Yes

Safety Provisions	Yes
Transport Facility	Yes
First Aid, Medical and Counseling Facilities	Yes
Sewage Disposal System	Yes
Vehicle Parking	Yes
Stand Alone Language Laboratory	Yes
Display of Courses and approved Intake	Yes

14. Internet Connection Details

Sl.No	Service Provider	Bandwidth in Mbps
1.	AT BROADBAND	150

15. Hostel Facilities

Sl. No	Hostel Type	Building Number	No of Rooms
1.	Boy's hostel	Block 7	55
2.	Girl's hostel	Block 8	32

16. Other Features

- ❖ Fully WiFi campus – 150 Mbps.
- ❖ Excellent placements.
- ❖ NSS units.
- ❖ Exclusive aptitude training and personality development programmes.
- ❖ High-profile experienced and dedicated Faculty.
- ❖ Physical Education Department with multi-gym & recreational facilities for gents and ladies.